

## RO22 and RO23 Batch Reflow Oven

- \* IR heating with convective support
- \* Leadfree alloy soaking
- \* Bigger area for soldering
- \* Automatic front door opening/closure
- \* Measurement temperature in 3 points
- \* Forced cooling PCB after soaking
- \* Desktop version - Favourable price



RO22 is batch type oven designed for leadfree soldering in preference. Partly shielded heaters result to rectangular heat distribution and muting negatives of heating in visible range of spectrum. Axial fan with dark heating spiral situated in backside warrant hot air moving under component as well as into so called heat shadows. So there is reached relative small temperature difference between components and it is perfect suitable for leadfree soldering.

The advantage of one cell batch type reflow oven is possibility of settings special profile for each PCB and maximum soldering time is almost unlimited.

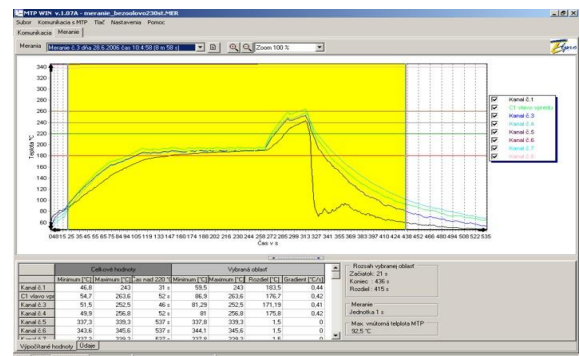
Oven RO22 is designed as autonomous device. PCB prepared for soldering is inserted on door rack and by pressing button situated on front panel is executed door closing and after that is executed soldering process. After finishing this process will door open and is applied forced PCB and oven cooling.

Inserting of solder programs is very easy by common PC keyboard which you can connect to oven. On front panel are two LCD displays for checking oven state and temperature. After connecting termocouple is possible to measure temperature diagram right on PCB.

### OPTIONAL:

NEW! Fume exhaust chamber for both model is available. Airproof chamber let you solder even in office rooms.

For precision temperature tracking and recording up to 8 channels we recommend to use Datalogger MTP-05. Set of complete accessories - just plug and play! Windows running easy to use software MTPWIN included.



### Technical data of RO22

Power supply:	230 V, 50 Hz
Power consumption:	4800 W (circuit breaker B 20A)
Dimensions LxWxH:	570 x 560 x 410 mm
Max. weight:	32 kg
Time setting:	1-999 sek.
Temperature setting:	50 - 260 °C
Rack dimension:	410 x 320 mm
Max PCB dimension :	400 x 290 mm

### Technical data of RO23

Power supply:	3-phase, 3x400V, 50 Hz
Power consumption:	4800 W max
Dimensions LxWxH:	750 x 570 x 450 mm
Max. weight:	37 kg
Time setting:	1-999 sek.
Temperature setting:	50-260 °C
Rack dimension:	410 x 500 mm
Max PCB dimension :	400 x 470 mm